

The *Arabidopsis* SUMO E3 ligase SIZ1 controls phosphate deficiency responses

Kenji Miura*, Ana Rus*, Altanbadralt Sharkhuu*, Shuji Yokoi*, Athikkattuvalasu S. Karthikeyan†, Kashchandra G. Raghobama†, Dongwon Baek‡, Yoon Duck Koo‡, Jing Bo Jin*, Ray A. Bressan*, Dae-Jin Yun**§, and Paul M. Hasegawa*

*Center for Plant Environmental Stress Physiology and †Department of Horticulture and Landscape Architecture, Purdue University, West Lafayette, IN 47907; and ‡Environmental Biotechnology National Core Research Center and Division of Applied Life Science (BK21 program), Graduate School of Gyeongsang National University, Jinju 660-701, Korea

Edited by Maarten J. Chrispeels, University of California at San Diego, La Jolla, CA, and approved April 5, 2005 (received for review February 2, 2005)

Plants sense phosphate (Pi) deficiency and initiate signaling that controls adaptive responses necessary for Pi acquisition. Herein, evidence establishes that AtSIZ1 is a plant small ubiquitin-like modifier (SUMO) E3 ligase and is a focal controller of Pi starvation-dependent responses. T-DNA insertional mutated alleles of AtSIZ1 (At5g60410) cause *Arabidopsis* to exhibit exaggerated prototypical Pi starvation responses, including cessation of primary root growth, extensive lateral root and root hair development, increase in root/shoot mass ratio, and greater anthocyanin accumulation, even though intracellular Pi levels in *siz1* plants were similar to wild type. AtSIZ1 has SUMO E3 ligase activity *in vitro*, and immunoblot analysis revealed that the protein sumoylation profile is impaired in *siz1* plants. AtSIZ1-GFP was localized to nuclear foci. Steady-state transcript abundances of Pi starvation-responsive genes *AtPT2*, *AtPS2*, and *AtPS3* were moderate but clearly greater in *siz1* seedlings than in wild type, where Pi is sufficient. Pi starvation induced the expression of these genes to the same extent in *siz1* and wild-type seedlings. However, two other Pi starvation-responsive genes, *AtIPS1* and *AtRNS1*, are induced more slowly in *siz1* seedlings by Pi limitation. PHR1, a MYB transcriptional activator of *AtIPS1* and *AtRNS1*, is an AtSIZ1 sumoylation target. These results indicate that AtSIZ1 is a SUMO E3 ligase and that sumoylation is a control mechanism that acts both negatively and positively on different Pi deficiency responses.

phosphate starvation response | phosphate starvation signaling | sumoylation | phosphorous

Phosphorous is a component of many important biological compounds, and it is an essential macronutrient for all organisms. However, acquisition by plants is problematic because phosphate (Pi) is unevenly distributed and relatively immobile in soils (1). Plants react to Pi limitation by activating numerous adaptive responses that presumably facilitate acquisition of this essential nutrient (2). These responses include biochemical processes that limit metabolic requirements for Pi, secretion of organic acids to the apoplast, and synthesis of enzymes that enable access to phosphorus contained in intracellular organic molecules, insoluble complexes, and organophosphates in the soil. Pi limitation also causes morphological responses that are presumed to be adaptive, including attenuated primary root growth, increased lateral root development, root/shoot mass ratio, lateral root number and length (3), and root/hair production (2). Pi deficiency also induces the expression of genes that facilitate Pi uptake into roots, distribution *in planta*, and acquisition from organic sources (2).

Several *Arabidopsis* genetic loci appear to function in Pi signaling and acquisition. Mutations in the *PHO3*, *PSR1*, *PDR2*, and *PHR1* genes impair Pi starvation signaling (4–7), whereas *pho1*, *pho2*, and *pup1* mutations attenuate Pi uptake and distribution within tissues (8–10). The transporters AtPT1 (Pht1;1) and AtPT2 (Pht1;4) facilitate Pi uptake in environments with low (2 μ M) and high (500 μ M) levels of Pi, respectively (11).

Pht2;1 transports Pi into chloroplasts and facilitates *in planta* Pi distribution (12).

The molecular mechanisms controlling Pi starvation sensing, signaling, and associated target gene activation that result in induced metabolic and phenotypic changes remain largely unresolved. The MYB transcription factor PHR1 is the only known molecular determinant required for Pi starvation-dependent responses (7). However, PHR1 controls a small subset of Pi starvation responses that apparently includes only a few genes whose expression is activated by Pi limitation. Genes controlled by PHR1 genes include *AtACP5* (acid phosphatase), *AtIPS1/3*, *At4*, and *RNS1* (7, 13, 14). PHR1 binds to the P1BS (PHR1-binding sequence) element that exists in the promoters of these genes (7). To a small extent, *phr1* plants respond to Pi limitation by accumulating less anthocyanin, fresh weight mass, and intracellular Pi, and they exhibit a lower root/shoot ratio than the wild type (7). Other root architecture modifications typically associated with Pi deficiency, such as increased root hair number and length, are unaffected by the *phr1* mutation (7). Together, the available data indicate that Pi starvation sensing and signal control are complex and involve numerous molecular determinants, many of which are not part of the PHR1 regulon and remain to be discovered.

Herein, we establish that mutations in *AtSIZ1* enhance sensitivity of *Arabidopsis* plants to Pi deprivation based on morphological responses, including reduction in primary root elongation and enhanced lateral root development, root/shoot mass ratio, and root hair number and development. Furthermore, transcript abundance of some Pi starvation-responsive genes is greater in *siz1* [*SAP* (scaffold attachment factor, acinus, protein inhibitor of activated signal transducer and activator of transcription) and *Miz1* (Msx2-interacting zinc finger), *SIZ*] plants than in the wild type under Pi sufficient conditions. Interestingly, the induction rates of two genes (*AtIPS1* and *AtRNS1*), whose responses to Pi starvation are controlled by PHR1, are reduced in *siz1* plants compared with the wild type. Heat shock-induced sumoylation is less in *siz1* plants, and recombinant AtSIZ1 can function as a small ubiquitin-like modifier (SUMO) E3 ligase to mediate sumoylation *in vitro*. SUMO E3 ligases transfer the SUMO peptide to the substrate *in vivo* (15) through functions that increase the affinity of the conjugating enzyme (E2) subunit for a specific target, stabilize E2–substrate interaction, orient the substrate acceptor K in the sumoylation motif (Ψ KXE), and contribute mechanistically to conjugation (15–17). Conjugation of the SUMO superfamily of proteins to a substrate (sumoylation) in both yeast and animals affects both positive and negative

This paper was submitted directly (Track II) to the PNAS office.

Abbreviations: MS, Murashige and Skoog; Pi, phosphate; PIAS, protein inhibitor of activated signal transducer and activator of transcription; Pi_{int}, intracellular Pi; SUMO, small ubiquitin-like modifier.

§To whom correspondence should be addressed. E-mail: djyun@gsnu.ac.kr.

© 2005 by The National Academy of Sciences of the USA

regulation by modulating protein–protein and protein–DNA interactions and intracellular targeting and controlling ubiquitination and other covalent modifications of proteins. Recently, functional evidence for a SUMO conjugation pathway in plants has been reported (18–20). Here, we determined that PHR1, which is the only presently identified transcriptional modulator of low Pi-induced responses, is sumoylated by an AtSIZ1-dependent process. Considering these findings and its function as a SUMO E3 ligase with multiple targets, AtSIZ1 appears to be an important regulator of Pi starvation responses in plants.

Materials and Methods

Plant Materials and Growth Conditions. The *Arabidopsis* T-DNA population in the Col-0 *gll sos3-1* background and identification of mutations that suppress *sos3-1* Na⁺ hypersensitivity were described in ref. 21. Unless indicated otherwise, 3-day-old seedlings were transferred to basal medium containing 1× Murashige and Skoog (MS) micronutrients, 1/5× or 1/20× macronutrients without KH₂PO₄, 3% sucrose, 2.5 mM Mes, B5 vitamins, 1.2% agar, and without or with various amounts of KH₂PO₄ or NaH₂PO₄. The Pi content of the basal medium without a Pi supplement was 10.6 ± 0.75 μM.

Three-week-old plants were removed from Metro-mix (Scotts, Marysville, OH), roots were carefully washed with water, and plants were transferred to modified Hoagland's solution (without aeration) containing 1 mM KH₂PO₄ (22). After 4 days of adaptation to solution culture, plants were transferred to a modified Hoagland's solution with 0.01 or 1 mM KH₂PO₄ (22).

Molecular Genetic Analysis of *siz1* T-DNA Insertion Alleles. The genomic sequence flanking the T-DNA left border in *sos3-1 siz1-1* plants (the Col-0 *gll* background) was determined by thermal asymmetric interlaced PCR analysis as described in ref. 21. *siz1-2* and *siz1-3* alleles in the Col-0 background were identified in the Salk Institute Genome Analysis Laboratory database, and T₃ seeds were provided by the Salk Institute laboratory through the *Arabidopsis* Biological Resource Center at Ohio State University.

Analysis of Sumoylation Profiles. Total protein from seedlings incubated at 24°C or at 40°C for 30 min were extracted as described in ref. 20 and separated by SDS/PAGE. The gel blot was probed with the AtSUMO1 antibody (kindly provided by G. Coupland, Max Planck Institute, Cologne, Germany) and detected by using ECL plus (Amersham Pharmacia).

Purification of Proteins for the *in Vitro* SUMO Conjugation Assay. To construct pGST-SIZ1, a cDNA fragment of *AtSIZ1* ORF was inserted in-frame into the pGEX-2TK vector (Amersham Pharmacia). To construct *PHR1*-expressing plasmids, a cDNA fragment encoding wild-type *PHR1* (pT7-PHR1) or a mutated *PHR1* [AA₇₈₂A to AGA and AA₁₁₁₅A to AGA by site-directed mutagenesis pT7-PHR1(2KR); ref. 23] was inserted into pET21a vector (Novagen). The wild-type protein is designated as T7-PHR1, and the variant is designated as T7-PHR1(2KR), harboring a mutation (K261R and K372R) in each of the two predicted sumoylation motifs in PHR1. Recombinant protein synthesis from pGST-SIZ1, pT7-PHR1, pT7-PHR1(2KR), or other expression vectors (kindly provided by Y. Kikuchi, Tokyo University, Tokyo) and the *in vitro* sumoylation assay were performed as described in ref. 23.

Supporting Information. For additional methods, see *Supporting Methods*, which is published as supporting information on the PNAS web site.

Results

T-DNA Insertional Mutations in *AtSIZ1* Suppress the Salt-Sensitive Phenotype of *sos3-1* and Cause Hyperresponsiveness to Pi Limitation.

T₂ lines from a T-DNA insertion population (pSKI015) in the *Arabidopsis* Col-0 *gll sos3-1* background were screened to identify second-site mutations that enhance NaCl tolerance (21). The *siz1-1* mutation suppressed NaCl sensitivity of *sos3-1* seedlings, but to a lesser extent than did *hkt1* alleles (data not shown and ref. 21). Decreasing the macronutrient concentration in the MS salt formulation to 1/20× resulted in a substantial reduction in primary root growth of *sos3-1 siz1-1* seedlings (data not shown). Normal root growth was restored by inclusion in the medium of 1.25 mM PO₄³⁻, either as KH₂PO₄ or NaH₂PO₄, but not by inclusion of any other macronutrient at the concentration in the full-strength MS salt formulation, e.g., 20 mM KCl, 19 mM KNO₃, 3 mM CaCl₂, or 1.6 mM MgSO₄ (data not shown).

sos3-1 siz1-1 seedlings exhibited substantially more pronounced prototypical Pi starvation root architecture responses than *sos3-1* or wild-type seedlings (Fig. 1A). On Pi-limited medium, *sos3-1 siz1-1* seedlings exhibited an inhibition of primary root growth (Fig. 1A; see also Fig. 6A, which is published as supporting information on the PNAS web site), an increase in lateral root development and length (Figs. 1A and 6B–D), an increase in root hair number and length (Fig. 1B), and higher root/shoot fresh weight ratio (Table 1, which is published as supporting information on the PNAS web site) than wild type. *sos3-1 siz1-1* plants grown on Pi-deficient medium for 25 days also accumulated more anthocyanin in leaves than did the wild type, and many of the *siz1* leaves were necrotic (data not shown). *sos3-1 siz1-1* plants grown in the greenhouse or growth chamber always exhibited reduced shoot and root biomass relative to the wild type that was not evident when these plants were grown *in vitro*. Despite this phenomenon, the relative increase in root/shoot biomass was greater for *sos3-1 siz1-1* plants than the wild type after transfer to Pi-deficient medium in hydroponic solution (Table 2, which is published as supporting information on the PNAS web site). *sos3-1 siz1-1* plants grown hydroponically began anthocyanin accumulation sooner than the wild type after transfer to Pi-deficient medium (data not shown).

sos3-1 siz1-1 seedlings and plants grown in Pi-sufficient medium (Fig. 2A) and hydroponic solution (Fig. 2B), respectively, accumulated more intracellular Pi (Pi_{int}) in shoots than did the wild type or *sos3-1*, but Pi_{int} in roots of these plants was similar. Symptoms of Pi toxicity were not detected in shoots of *sos3-1 siz1-1* seedlings, as is the case in shoots of Pi hyperaccumulating *pho2* (9) that was included as a control in this experiment (Fig. 2). Pi_{int} levels in *sos3-1 siz1-1*, *sos3-1*, and wild-type seedlings and plants were similar when grown in Pi-deficient medium or solution (Fig. 2) even though *sos3-1 siz1-1* seedlings exhibited responses to Pi limitation earlier and to a greater extent than the wild type (Figs. 1 and 6).

AtSIZ1 Encodes a Putative SUMO E3 Ligase. Thermal asymmetric interlaced PCR analysis of *sos3-1 siz1-1* plants identified a T-DNA insertion in the 13th exon of At5g60410 (GenBank accession no. NM_125434) at +986 bp from the translation initiation codon as determined by analysis of the full-length cDNA sequence (R22197; Fig. 3A). At5g60410 is annotated as *AtSIZ1*, and this mutant allele is designated as *siz1-1*. Using the GenBank database, the *AtSIZ1* product is predicted to be a peptide of 833 aa, which is an apparent ortholog of *Saccharomyces cerevisiae* Siz1 and Siz2 and human protein inhibitor of activated signal transducer and activator of transcription (PIAS) proteins (Fig. 3B; see also Fig. 7, which is published as supporting information on the PNAS web site) (19). AtSIZ1 contains five predicted domains conserved in Siz/PIAS SUMO E3 ligases. These domains include a SAP domain that is implicated in

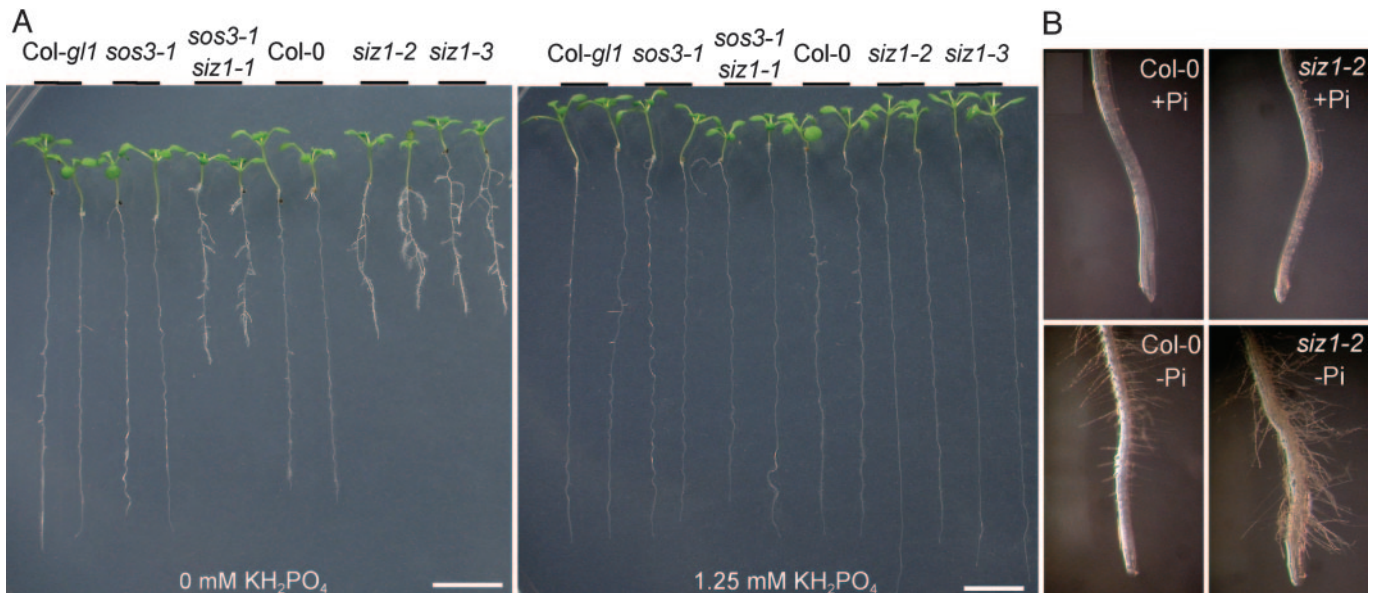


Fig. 1. *Arabidopsis* plants harboring *siz1* mutations are hyperresponsive to Pi limitation in root architecture development. (A) Photographs are of representative wild-type [Col-0 or Col-0 *gl1* (Col-*gl1*)], *sos3-1*, *sos3-1 siz1-1*, *siz1-2*, and *siz1-3* seedlings 11 days after transfer onto medium containing 1/20 \times MS macronutrients without or with KH_2PO_4 supplement. *sos3-1* and *sos3-1 siz1-1* are in the Col-0 *gl1* background, and *siz1-2* and *siz1-3* are in the Col-0 background. (B) Photographs are of wild-type and *siz1-2* seedling roots 7 days after transfer onto medium containing 1/20 \times MS macronutrients without (-Pi) or with 1.25 mM KH_2PO_4 (+Pi).

chromatin organization, a Siz/PIAS-RING domain that is necessary for SUMO E3 ligase activity, a “PINIT” motif for nuclear retention (24), a “SXS” motif that promotes binding to SUMO

(25), and a putative nuclear localization sequence (Fig. 3B). *AtSIZ1* also has a plant homeodomain-finger (PHD) domain that is not present in Siz/PIAS proteins. The PHD domain is associated with chromatin remodeling complexes (26) or functions as an ubiquitin E3 ligase (27).

F₁ and F₂ analyses of progeny derived from a backcross with *sos3-1* (*sos3-1* \times *sos3-1 siz1-1*) indicated that *siz1-1* is a monogenic recessive mutation [F₂ analysis, $n = 407$ for, $\chi^2 = 1.25$, $P = 0.26$ for a 3:1 (normal:short primary root on Pi-deficient medium) segregation ratio]. Seedlings harboring additional mutations in *AtSIZ1*, *siz1-2* (SALK_065397), and *siz1-3* (SALK_034008) (Fig. 3A) exhibited similar root architecture responses to Pi deficiency as did *sos3-1 siz1-1* seedlings, and these responses were suppressed by the addition of either KH_2PO_4 or

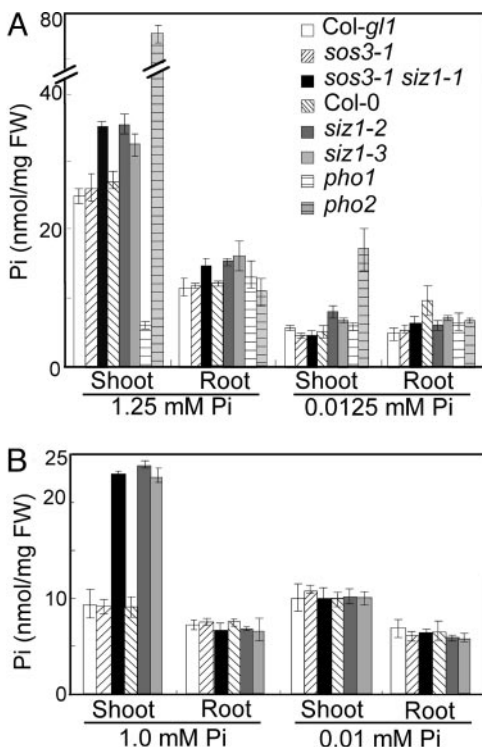


Fig. 2. Pi_{int} in the shoot and the root of wild-type and *siz1* seedlings and plants is comparable. Shown are seedlings grown for 11 days on medium containing 1/5 \times MS macronutrients with 0.0125 or 1.25 mM KH_2PO_4 (A) or plants grown for 2 weeks in hydroponic solution with 0.01 or 1 mM KH_2PO_4 (B) were harvested, mean values \pm SE, $n = 6$. *pho1* and *pho2* seedlings were used as controls in A (8, 9).

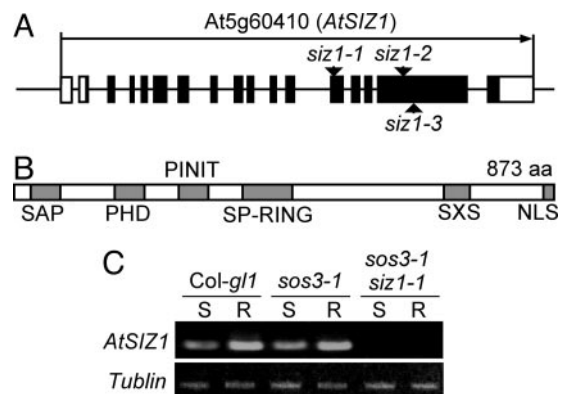


Fig. 3. *AtSIZ1* locus is At5g60410 as determined by thermal asymmetric interlaced PCR and T-DNA insertion diagnostic PCR. (A) Gene organization of *AtSIZ1* and schematic representation of T-DNA insertion alleles are illustrated (arrowheads). Filled boxes are exons, and open rectangles are 5' or 3' untranslated regions. (B) Diagram illustrates the domain organization of *AtSIZ1* (see Results). (C) *AtSIZ1* is expressed in the root (R) and the shoot (S) of the wild type but not in these organs of *siz1* seedlings.

NaH₂PO₄ (Figs. 1 and 6). Furthermore, *siz1-2* and *siz1-3* seedlings and plants accumulated comparable Pi_{int} and developed a higher root/shoot mass ratio in response to Pi deprivation, as did *sos3-1 siz1-1* (Fig. 2 and Tables 1 and 2). These data establish that the responses to Pi limitation exhibited by *sos3-1 siz1-1* seedlings are due to the *siz1-1* mutation. Primary root growth analysis on Pi-deficient medium of F₁ progeny from the cross between *siz1-2* and *siz1-3* indicated that the mutations are allelic (data not shown). *AtSIZ1* mRNA was more abundant in roots than in shoots of wild-type and *sos3-1* seedlings (Fig. 3C) but was not detected in *sos3-1 siz1-1* seedlings (Fig. 3C) or *siz1-2* or *siz1-3* seedlings (data not shown).

In Vitro and in Vivo Data Indicate That AtSIZ1 Functions as a SUMO E3 Ligase. An immunoblot of total protein by using anti-AtSUMO1 (20) indicated no difference in accumulation of SUMO or SUMO conjugation products in *siz1-2* and wild-type seedlings that are grown at 24°C (Fig. 4A). In contrast, *esd4* seedlings accumulate numerous sumoylated products, whereas the amounts of free SUMO peptides are depleted (data not shown and ref. 20). Heat shock increased SUMO conjugation in wild-type plants (19), but the extent of heat shock-induced sumoylation was substantially less in *siz1-2* plants (Fig. 4A). Together these results provide evidence that AtSIZ1 is involved in the sumoylation of *Arabidopsis* proteins.

GST-AtSIZ1 could substitute for T7-ScSiz2-His to stimulate sumoylation in an *in vitro* assay (23) that included *S. cerevisiae* E1 (GST-ScAos1 + GST-ScUba2), E2 (ScUbc9), SUMO substrate (T7-ScCdc3-His), and SUMO (His-ScSmt3) and used anti-ScSmt3 to detect sumoylated products (Fig. 4B Upper). GST-AtSIZ1 (112 kDa) or ScSiz2 (82 kDa) was detected (Fig. 4B) on the anti-ScSmt3 immunoblot because each protein is sumoylated. Immunoblot analysis by using anti-T7 antibody (detecting T7-ScCdc3-His) indicated that AtSIZ1 mediates ScSmt3 conjugation to ScCdc3, as does ScSiz2 (Fig. 4B Lower). ScCdc3 contains seven sumoylation sites, and these different products are evident on the blot (Fig. 4B Lower and ref. 23). Together, the immunoblot analysis of the *in vivo* sumoylation products and the *in vitro* assay results establish that AtSIZ1 functions as a SUMO E3 ligase in *Arabidopsis*.

AtSIZ1-GFP was detected specifically in the same compartment as the red fluorescent protein control (ref. 28 and Fig. 8A, which is published as supporting information on the PNAS web site), indicating that AtSIZ1 is localized to the nucleus. Higher magnification revealed that AtSIZ1 localizes predominantly to punctuate structures in the nucleus (Fig. 8B). Expression of AtSIZ1-GFP suppressed both the hyperresponses of *siz1-2* seedlings to Pi starvation and the reduced shoot and root biomass phenotypes of *siz1-2* plants (data not shown). These results indicate that AtSIZ1-GFP is functional and that AtSIZ1 compartmentalizes to nuclear speckles, as do PIAS proteins (29).

***siz1* Mutations Cause an Alteration in Pi Starvation-Dependent Signaling.** *AtPT2* (*Phl1;4*), *AtPS2* (acid phosphatase; ref. 30), and *AtPS3* (glycerol-3-phosphate permease, Raghothama, unpublished data), but not *AtIPS1* or *AtRNS1*, transcript abundances were greater in *siz1* than in wild-type seedlings when both were grown in Pi-sufficient medium (Fig. 5A). However, Pi starvation induced the expression of *AtPT2*, *AtPS2*, and *AtPS3* to a comparable level in both the wild-type and *siz1* seedlings after 48 h in Pi-deficient medium (Fig. 5A). Pi starvation induction of *AtIPS1* and *AtRNS1* transcript abundances occurred more slowly in *siz1* than in wild-type seedlings (Fig. 5A) but eventually increased to levels similar to the wild type after an extended period of Pi limitation (i.e., 48 h or 72 h; data not shown). Together, these results indicate that the function of AtSIZ1 in Pi starvation signaling is different for these two specific subsets of target genes. *AtPT2*, *AtPS2*, and *AtPS3* are negatively regulated

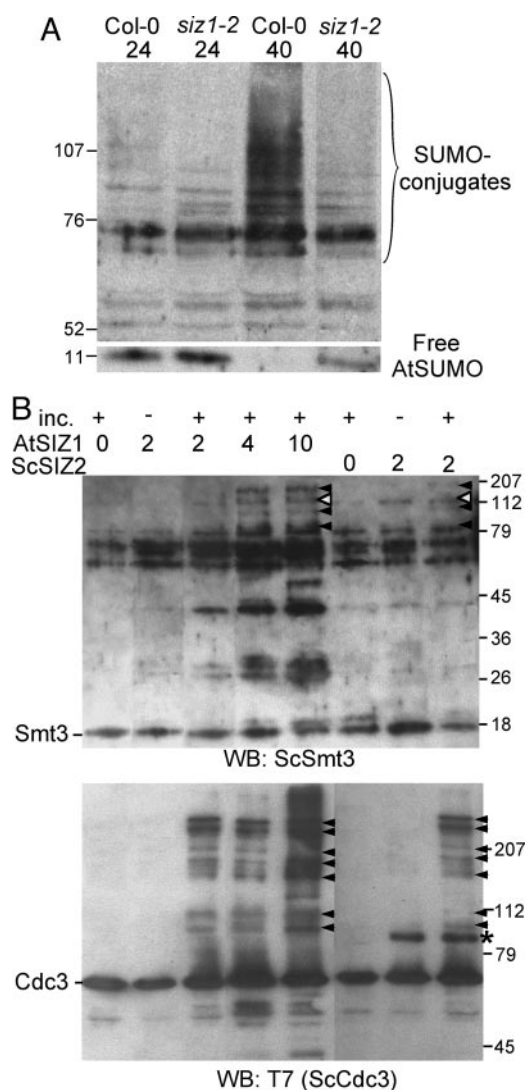


Fig. 4. *In vitro* and *in vivo* assays indicate that AtSIZ1 is a SUMO E3 ligase. (A) *In planta* sumoylation profiles of wild-type and *siz1-2* seedlings that were grown for 10 days on 1× MS medium at 24°C (24) and then exposed to a 30-min heat shock of 40°C (40). (B) Analysis of *in vitro* sumoylation profiles indicates that AtSIZ1 facilitates production of ScSmt3-ScCdc3 conjugates. The indicated amount of GST-AtSIZ1 (0, 2, 4, or 10 μg) or ScSiz2 (0 or 2 μg) was added to the reaction mixture and incubated with 10 mM ATP at 37°C for 0 (inc. -) or 90 min (inc. +) as described in ref. 23. Immunoblot analysis was performed with anti-ScSmt3 (Upper) or anti-T7 (detecting T7-ScCdc3; Lower). Filled arrowheads indicate bands corresponding to ScSmt3-ScCdc3 conjugates. Open arrowheads identify the AtSIZ1-ScSmt3 and ScSiz2-ScSmt3 conjugates. An asterisk identifies the T7-ScSiz2-His protein. Numerals identify the migration position and molecular mass of the markers (kilodaltons).

by *AtSIZ1* in Pi-sufficient conditions, and *AtIPS1* and *AtRNS1* are positively regulated by *AtSIZ1* during the initial stages of induction by Pi limitation (for primer sequences for these genes, see Table 3, which is published as supporting information on the PNAS web site).

AtIPS1 and *AtRNS1* are members of the PHR1 regulon (7). The MYB transcription factor PHR1, which binds to a P1BS element in the promoter of *AtIPS1* and is necessary for transcription of *AtIPS1* and *AtRNS1* (7), contains two predicted sumoylation sites. AtSIZ1 facilitated the sumoylation of PHR1 (Fig. 5B). Mutations to residues in the predicted sumoylation sites, K261R and K372R, in PHR1 prevented sumoylation of PHR1 (Fig. 5B). These results further indicate that sumoylation

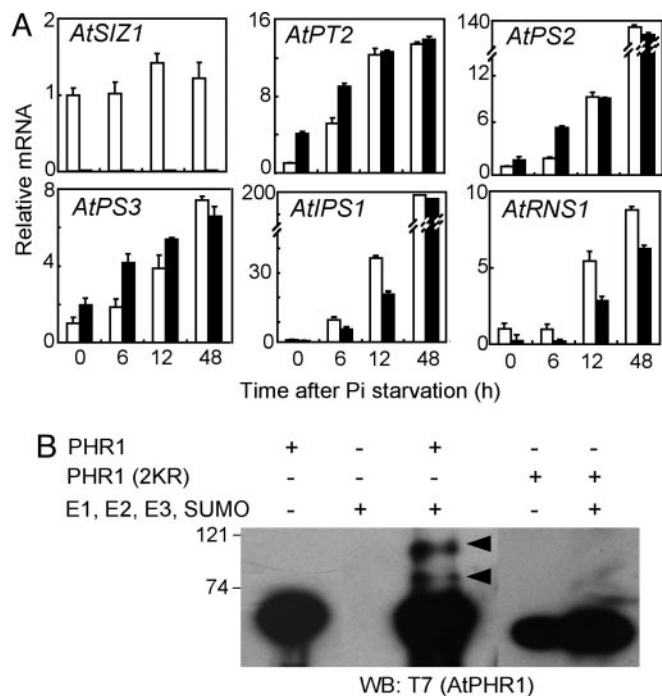


Fig. 5. Pi-responsive transcript abundance is altered in *siz1* plants, and AtSIZ1 facilitates sumoylation of PHR1. (A) Pi starvation-responsive gene mRNA levels in Col-0 (wild type, open bars) and *siz1-2* (filled bars) seedlings were determined by quantitative PCR. Seedlings were grown in liquid medium containing $1/5 \times$ MS macronutrients and $1 \times$ MS micronutrients with 1.25 mM KH_2PO_4 for 7 days and then transferred to medium without KH_2PO_4 . Samples were collected immediately after transfer to medium without Pi (0 h) or after various time points in this medium (6, 12, or 48 h). (B) AtSIZ1 mediates *in vitro* sumoylation of PHR1. T7-PHR1 or T7-PHR1(2KR) were used as substrates for sumoylation in the reaction mixture containing ScAos1 (E1), ScUba2 (E1), ScUbc9 (E2), ScSmt3 (SUMO, 23), and AtSIZ1 (E3) proteins. PHR1 proteins were detected with anti-T7 antibody. Arrowheads indicate the position of sumoylated PHR1 proteins.

of PHR1 positively controls the expression of *AtIPS1* and *AtRNS1*.

Discussion

Genetic, physiological, molecular, and biochemical data presented here establish an important function for the plant SUMO E3 AtSIZ1 in the signaling system that coordinates plant responses to Pi starvation. More than any other identified locus or molecular genetic determinant yet described, AtSIZ1 influences a greater number of processes that are considered to be adaptation responses to low Pi availability, including root architecture changes, gene expression modulation, and anthocyanin accumulation (4–12). Our results establish that the MYB transcription factor PHR1, the only defined molecular controller of Pi deficiency responses (7), is a sumoylation target of AtSIZ1. However, AtSIZ1 affects several Pi starvation responses that are not controlled by PHR1, indicating that sumoylation is a more encompassing process in the control of adaptation to Pi deficiency.

AtSIZ1 can replace ScSiz2 to sumoylate the substrate ScCdc3 in an *in vitro* assay, providing evidence of its SUMO E3 ligase activity (Fig. 4B and ref. 23). Reduction of heat shock-induced SUMO conjugation in seedlings with a defective *AtSIZ1* gene demonstrates that AtSIZ1 facilitates sumoylation *in planta* (Fig. 4A). AtSIZ1 localizes to nuclear speckles (Fig. 8), as do mammalian Siz/PIAS proteins, which are in structures that resemble the promyelocytic leukemia nuclear bodies (29). Together these

results indicate that AtSIZ1 is a plant member of the Siz/PIAS category of SUMO E3.

AtSIZ1 is annotated as the only member of a single-gene family in *Arabidopsis* (19); however, three independent dysfunctional *siz1* T-DNA insertion alleles are not lethal. Apparently, an alternative SUMO E3 performs the necessary functions of AtSIZ1, or AtSIZ1 is not essential for survival, even though sumoylation through AtSIZ1 controls critical processes in plants, as established by the results presented herein. Mutations in both *ScSiz* genes that are present in yeast also are not lethal (16). Although no additional gene encoding a Siz/PIAS E3 is evident in the *Arabidopsis* genome based on database analysis, it should be noted that ESD4 was not predicted to be a SUMO protease by bioinformatics (19, 20), further suggesting that there are unidentified functional *Arabidopsis* loci that can substitute for the function of *AtSIZ1*. Alternatively, two other categories of SUMO E3 are known to exist in animals: RanBP2 (Ran binding protein 2) and Pc2 (polycomb protein 2). RanBP2 functions as an E3 that attaches SUMO to RanGAP, a process that is involved in nucleocytoplasmic trafficking (15). At3g18610 and At2g34150 encoding AtRanGAP1 and AtRanGAP2, respectively, are likely to be sumoylated by a yet to be identified RanBP2-like E3 ligase (31). The Pc2-type SUMO E3 is a member of the polycomb group (PcG) of proteins that form large multimeric corepressor complexes (PcG bodies) that facilitate gene silencing (15, 32). Mammalian Pc2 contains a CHROMO (chromatin organization modifier) domain, and sumoylation is a control process involved in the function of PcG complexes (32). *Arabidopsis* LHP1/TFL2 has a CHROMO domain and functions in the PcG complex to repress floral homeotic genes and modulate plant development (33). LHP1 is also localized to discrete rounded subnuclear foci throughout the nucleoplasm similar to Pc2 in *Drosophila* (33).

AtSIZ1 Is a Repressor of the Low Pi-Induced Responses. *siz1* seedlings and plants exhibit exaggerated symptoms that are associated with Pi deficiency, including reduced primary root growth and increased lateral root and root hair number and length, root/shoot mass ratio, and anthocyanin accumulation (Figs. 1 and 6 and refs. 34 and 35). Pi limitation reduces primary root growth by attenuating cell division and promoting lateral root density and length, root architecture changes that are considered to facilitate Pi acquisition (3, 34). These results indicate that AtSIZ1 is a negative regulator of Pi starvation-dependent signaling that controls root architecture and anthocyanin accumulation. Interestingly, these hyperresponses to low extracellular Pi occur even though P_{int} is somewhat greater (sufficient medium) or equivalent (deficient medium) in the shoots of *siz1* seedlings and plants compared with the wild type (Fig. 2). However, shoot P_{int} accumulation (sufficient medium) in *siz1* seedlings is not equivalent to *pho2* plants that hyperaccumulate Pi and exhibit symptoms of Pi toxicity (9).

Transcript abundances of the Pi starvation responsive genes *AtPT2*, *AtPS2*, and *AtPS3* are greater in *siz1* compared with the wild-type seedlings grown under Pi sufficient conditions (Fig. 5A). However, Pi deprivation still increases the abundances of transcripts of these genes in *siz1* seedlings to the same extent as observed in the wild type. This capacity for *siz1* seedlings and plants to still respond to Pi limitation by increasing the expression of these genes, by changing root architecture, and by accumulating anthocyanin is indicative that the function of AtSIZ1 may be downstream of the Pi starvation sensing mechanism (Fig. 5). Other genetic loci, including *PHR1*, *PDR2*, *PHO1-3*, *Pht1;1*, *Pht1;4*, and *PSR1* (4–12), are not individually required to regulate all of the Pi starvation responses that are affected by AtSIZ1, indicating that AtSIZ1 may be a critical regulator that is upstream of these other determinants.

Because coregulation of transcriptional activators is a major

function of mammalian PIAS family proteins (17, 29), repression of low Pi-induced root architecture and anthocyanin accumulation, and *AtPT2*, *AtPS2*, and *AtPS3* expression responses that are controlled by AtSIZ1 likely involves negative regulation of transcription factor(s) through AtSIZ1-mediated sumoylation. Two regions of the *AtPT2* promoter bind nuclear protein factors from Pi-sufficient but not Pi-deficient plants (36), indicating that these factors may play a role in the repression of *AtPT2* expression. However, these regulatory factors have yet to be identified, so direct evidence that sumoylation is necessary for the function of a repressor complex that controls low Pi signaling cannot be assessed.

AtSIZ1 Acts also as a Positive Regulator of Some Pi Starvation Responses. Pi starvation-dependent transcript accumulation of *AtIPS1* and *AtRNS1* occurs at a reduced rate in *siz1* seedlings compared with wild type (Fig. 5A). Transcriptional activation of these genes has been attributed to the interaction of the MYB transcription factor PHR1 with the P1BS element in the promoter of these genes (7). Recently, additional evidence based on experimentation by using *HvPht1;1* has supported the possibility that the P1BS element has a transcriptional activation function (37). Our determination that AtSIZ1 participates in the sumoylation of PHR1 (Fig. 5B) indicates that sumoylation may activate PHR1, which provides a mechanism for reduced Pi starvation induction of *AtIPS1* and *AtRNS1* expression in *siz1* seedlings. Sumoylation functions to activate transcription factors in animals, including heat shock factors (38). After prolonged Pi deprivation, *AtIPS1* and *AtRNS1* transcript abundances are similar in *siz1* and wild type (Fig. 5A for *AtIPS1* and data not shown for *AtRNS1*), indicating that AtSIZ1 has a transient function in this process. However, this mechanism does not explain how AtSIZ1 affects PHR1 modulation of anthocyanin or Pi accumulation or root/shoot mass ratio. Other genetic loci are implicated in Pi starvation signaling, such as *PDR2*, *PSR1*, and

PHO3 (4–6). The *pdr2* mutation causes inhibition of primary root cell division and subsequent loss of meristematic activity (6). *PDR2* may function in modulating meristematic activity and controlling root architecture when Pi is limiting. However, the sequences of these genes have not been identified, and, therefore, it is not possible to establish by more direct evidence whether sumoylation is involved in their functions.

Taken together, our results confirm that multiple signaling pathways are involved in the control of Pi starvation responses (Fig. 5). *AtIPS1* and *AtRNS1* are positively controlled by AtSIZ1 through sumoylation of the transcription factor PHR1. However, PHR1 and its sumoylation apparently do not have a major effect on low Pi-induced phenotypic responses or on the expression of *AtPT2*, *AtPS2*, and *AtPS3*, which are involved in adaptation and are negatively controlled by AtSIZ1. Alternatively, PHR1 function in *Arabidopsis* may be redundant. In any case, it is clear that a major function AtSIZ1 in Pi-starvation responses involves the control of a repressor system that attenuates gene expression and developmental responses that are only derepressed (activated) by Pi starvation. The role of AtSIZ1 as an important regulator of plant adaptation to Pi deficiency constitutes a previously uncharacterized function of sumoylation. It is clear that further research is necessary to define all of the mechanisms by which AtSIZ1 controls Pi deficiency responses.

We thank Ms. Wanda Hunter and Ms. Tomoko Miura for assistance and the *Arabidopsis* Biological Research Center and the Salk Institute for T-DNA-tagged lines and a cDNA clone. This work was supported by National Science Foundation Plant Genome Award DBI-98-13360, grants from the Biogreen 21 program, the Environmental Biotechnology National Core Research Center (R15-2003-012-01002-0), the Plant Diversity Research Center, the Ministry of Sports and Technology (PF0330401-00), and the BK21 program, and JSPS-Junior Scientist Research Fellowship 3117. This work is Purdue University Agricultural Research Program Paper 2005-17626.

- Holford, I. C. R. (1997) *Aust. J. Soil Res.* **35**, 227–239.
- Raghothama, K. G. (1999) *Annu. Rev. Plant Physiol. Plant Mol. Biol.* **50**, 665–693.
- López-Bucio, J., Cruz-Ramírez, A. & Herrera-Estrella, L. (2003) *Curr. Opin. Plant Biol.* **6**, 280–287.
- Zakhlenuk, O. V., Raines, C. A. & Lloyd, J. C. (2001) *Planta* **212**, 529–534.
- Chen, D. L., Delatorre, C. A., Bakker, A. & Abel, S. (2000) *Planta* **211**, 13–22.
- Ticconi, C. A., Delatorre, C. A., Lahner, B., Salt, D. E. & Abel, S. (2004) *Plant J.* **37**, 801–814.
- Rubio, V., Linhares, F., Solano, R., Martín, A. C., Iglesias, J., Leyva, A. & Paz-Ares, J. (2001) *Genes Dev.* **15**, 2122–2133.
- Poirier, Y., Thoma, S., Somerville, C. & Schiefelbein, J. (1991) *Plant Physiol.* **97**, 1087–1093.
- Delhaize, E. & Randall, P. J. (1995) *Plant Physiol.* **107**, 207–213.
- Trull, M. C. & Deikman, J. (1998) *Planta* **206**, 544–550.
- Shin, H., Shin, H.-S., Dewbre, G. R. & Harrison, M. J. (2004) *Plant J.* **39**, 629–642.
- Versaw, W. K. & Harrison, M. J. (2002) *Plant Cell* **14**, 1751–1766.
- Martín, A. C., del Pozo, J. C., Iglesias, J., Rubio, V., Solano, R., de la Peña, A., Leyva, A. & Paz-Ares, J. (2000) *Plant J.* **24**, 559–567.
- Bariola, P. A., Howard, C. J., Taylor, C. B., Verburg, M. T., Jaglan, V. D. & Green, P. J. (1994) *Plant J.* **6**, 673–685.
- Melchior, F., Schergaut, M. & Pichler, A. (2003) *Trends Biochem. Sci.* **28**, 612–618.
- Johnson, E. S. (2004) *Annu. Rev. Biochem.* **73**, 355–382.
- Schmidt, D. & Müller, S. (2003) *Cell. Mol. Life Sci.* **60**, 2561–2574.
- Lois, L. M., Lima, C. D. & Chua, N. H. (2003) *Plant Cell* **15**, 1347–1359.
- Kurepa, J., Walker, J. M., Smalle, J., Gosink, M. M., Davis, S. J., Durham, T. L., Sung, D. Y. & Vierstra, R. D. (2003) *J. Biol. Chem.* **278**, 6862–6872.
- Murtas, G., Reeves, P. H., Fu, Y.-F., Bancroft, I., Dean, C. & Coupland, G. (2003) *Plant Cell* **15**, 2308–2319.
- Rus, A., Sharkhuu, A., Reddy, M., Lee, B.-h., Matsumoto, T. K., Koiwa, H., Zhu, J.-K., Bressan, R. A. & Hasegawa, P. M. (2001) *Proc. Natl. Acad. Sci. USA* **98**, 14150–14155.
- Liu, C., Muchhal, U. S., Uthappa, M., Kononowicz, A. K. & Raghothama, K. G. (1998) *Plant Physiol.* **116**, 91–99.
- Takahashi, Y., Toh-E, A. & Kikuchi, Y. (2003) *J. Biochem.* **133**, 415–422.
- Duval, D., Duval, G., Kedinger, C., Poch, O. & Boeuf, H. (2003) *FEBS Lett.* **554**, 111–118.
- Minty, A., Dumont, X., Kaghad, M. & Caput, D. (2000) *J. Biol. Chem.* **275**, 36316–36323.
- Bochar, D. A., Savard, J., Wang, W., Lafleur, D. W., Moore, P., Cote, J. & Shiekhattar, R. (2000) *Proc. Natl. Acad. Sci. USA* **97**, 1038–1043.
- Coscoy, L. & Ganem, D. (2003) *Trends Cell Biol.* **13**, 7–12.
- Lee, Y. J., Kim, D. H., Kim, Y. W. & Hwang, I. (2001) *Plant Cell* **13**, 2175–2190.
- Seeler, J. S. & Dejean, A. (2003) *Nat. Rev. Mol. Cell Biol.* **4**, 690–699.
- Baldwin, J. C., Karthikeyan, A. S. & Raghothama, K. G. (2001) *Plant Physiol.* **125**, 728–737.
- Rose, A. & Meier, I. (2001) *Proc. Natl. Acad. Sci. USA* **98**, 15377–15382.
- Kagey, M. H., Melhuish, T. A. & Wotton, D. (2003) *Cell* **113**, 127–137.
- Gaudin, V., Libault, M., Pouteau, S., Juul, T., Zhao, G., Lefebvre, D. & Grandjean, O. (2001) *Development (Cambridge, U.K.)* **128**, 4847–4858.
- Abel, S., Ticconi, C. A. & Delatorre, C. A. (2002) *Physiol. Plant.* **115**, 1–8.
- Trull, M. C., Gultinan, M. J., Lynch, J. P. & Deikman, J. (1997) *Plant Cell Environ.* **20**, 85–92.
- Mukatira, U. T., Liu, C., Varadarajan, D. K. & Raghothama, K. G. (2001) *Plant Physiol.* **127**, 1854–1862.
- Schünmann, P. H. D., Richardson, A. E., Vickers, C. E. & Delhaize, E. (2004) *Plant Physiol.* **136**, 4205–4214.
- Hilgarth, R. S., Hong, Y., Park-Sarge, O.-K. & Sarge, K. D. (2003) *Biochem. Biophys. Res. Comm.* **303**, 196–200.

Corrections

BIOCHEMISTRY. For the article “Scanning the human proteome for calmodulin-binding proteins,” by Xinchun Shen, C. Alexander Valencia, Jack Szostak, Biao Dong, and Rihe Liu, which appeared in issue 17, April 26, 2005, of *Proc. Natl. Acad. Sci. USA* (**102**, 5969–5974; first published April 19, 2005; 10.1073/pnas.0407928102), the author name Jack Szostak should have appeared as Jack W. Szostak. The online version has been corrected. The corrected author line appears below.

Xinchun Shen, C. Alexander Valencia, Jack W. Szostak, Biao Dong, and Rihe Liu

The authors note several additions to the author contribution footnote. The corrected author contribution footnote, which appears online only, is shown below.

Author contributions: X.S., C.A.V., J.W.S., B.D., and R.L. designed research; X.S., C.A.V., B.D., and R.L. performed research; R.L. contributed new reagents/analytic tools; X.S., C.A.V., B.D., and R.L. analyzed data; and X.S., C.A.V., J.W.S., and R.L. wrote the paper.

www.pnas.org/cgi/doi/10.1073/pnas.0504552102

ECOLOGY. For the article “Diverse taxa of cyanobacteria produce β -N-methylamino-L-alanine, a neurotoxic amino acid,” by Paul Alan Cox, Sandra Anne Banack, Susan J. Murch, Ulla Rasmussen, Georgia Tien, Robert Richard Bidigare, James S. Metcalf, Louise F. Morrison, Geoffrey A. Codd, and Birgitta Bergman, which appeared in issue 14, April 5, 2005, of *Proc. Natl. Acad. Sci. USA* (**102**, 5074–5078; first published April 4, 2005; 10.1073/pnas.0501526102), the authors note that on page 5074, the first sentence of the second full paragraph, right column, should read “BMAA was recently discovered in the brain tissues of eight of nine Alzheimer’s patients,” and not “BMAA was recently discovered in the brain tissues of nine Canadian Alzheimer’s patients.” The authors also note on page 5075, first line in the right column, “Lyophilized samples (5–20 μ g dry weight)” should read “Lyophilized samples (5–20 mg dry weight).” In addition, on page 5076, the unit quantification “mol” in both columns (line 8 in left column; line 1 in right column) should read “ μ mol.” These errors do not change the conclusion of the article.

www.pnas.org/cgi/doi/10.1073/pnas.0504625102

IMMUNOLOGY. For the article “Recombinant NY-ESO-1 protein with ISCOMATRIX adjuvant induces broad integrated antibody and CD4+ and CD8+ T cell responses in humans,” by Ian D. Davis, Weisan Chen, Heather Jackson, Phillip Parente, Mark Shackleton, Wendie Hopkins, Qiyuan Chen, Nektaria Dimopoulos, Tina Luke, Roger Murphy, Andrew M. Scott, Eugene Maraskovsky, Grant McArthur, Duncan MacGregor, Sue Sturrock, Tsin Yee Tai, Simon Green, Andrew Cuthbertson, Darryl Maher, Lena Miloradovic, Susan V. Mitchell, Gerd Ritter, Achim A. Jungbluth, Yao-Tseng Chen, Sacha Gnjatich, Eric W. Hoffman, Lloyd J. Old, and Jonathan S. Cebon, which appeared in issue 29, July 20, 2004, of *Proc. Natl. Acad. Sci. USA* (**101**, 10697–10702; first published July 13, 2004; 10.1073/pnas.0403572101), the authors note that on page 10701, first column, second full paragraph, “With a median followup of 748 days, 16 have relapsed: five of seven placebo pts, nine of 16 who received protein alone and two of 19 who received NY-ESO-1 with IMX” should read: “With a median followup of 748 days, 16 have relapsed: five of seven placebo pts, six of 16 who received protein alone and two of 19 who received NY-ESO-1 with IMX.” The conclusions of the article remain unchanged.

www.pnas.org/cgi/doi/10.1073/pnas.0504548102

PLANT BIOLOGY. For the article “The *Arabidopsis* SUMO E3 ligase SIZ1 controls phosphate deficiency responses,” by Kenji Miura, Ana Rus, Altanbadralt Sharkhuu, Shuji Yokoi, Athikkattuvalasu S. Karthikeyan, Kashchandra G. Raghohama, Dongwon Baek, Yoon Duck Koo, Jing Bo Jin, Ray A. Bressan, Dae-Jin Yun, and Paul M. Hasegawa, which appeared in issue 21, May 24, 2005, of *Proc. Natl. Acad. Sci. USA* (**102**, 7760–7765; first published May 13, 2005; 10.1073/pnas.0500778102), the authors note that in the Acknowledgments, the “Ministry of Science and Technology” was inadvertently identified as the “Ministry of Sports and Technology,” due to a printer’s error.

www.pnas.org/cgi/doi/10.1073/pnas.0504375102